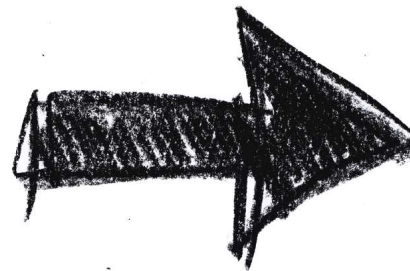


ONLINE MEETING FOR EXCHANGE STUDENTS 31ST JAN 2022



Please be aware that **the whole meeting is recorded.**
Chat is disabled during the presentation,
it will be open for your questions & answers afterward.
Compilation of FAQs will be provided after the meeting.

THE MEETING RECORDING
THE PRESENTATION IN PDF FORM
COMPILATION OF FAQs



WILL BE AVAILABLE
HERE.



FACULTY
OF SOCIAL SCIENCES
Charles University

ONLINE MEETING FOR EXCHANGE STUDENTS 31ST JAN 2022



WELCOME!

SUMMER SEMESTER 2021/2022

STARTING 10:00 AM (CET)

HOST: IO, FACULTY OF SOCIAL SCIENCES

IO COORDINATORS: MAGDA & ANTONELLA



FACULTY
OF SOCIAL SCIENCES
Charles University

SPECIAL GUESTS



THE CU DORM'S REPRESENTATIVE: MRS. MIROSLAVA HURDOVÁ

GENERAL EMAIL: [ACCOMMODATION@KAM.CUNI.CZ](mailto:accommodation@kam.cuni.cz)

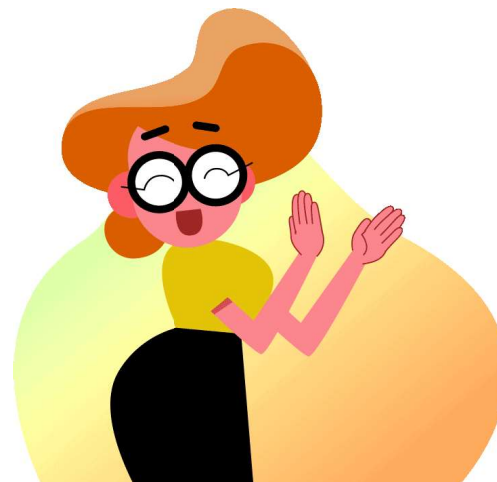


THE CU EUROPEAN OFFICE REPRESENTATIVE: MR. DOMINIK OBRUČA, MRS. LUCIE RŮŽIČKOVÁ

GENERAL EMAIL: [ERASMUS@RUK.CUNI.CZ](mailto:erasmus@ruk.cuni.cz)



FACULTY
OF SOCIAL SCIENCES
Charles University



WHAT WE WILL COVER TODAY

► Welcome Week details

► Stay tuned

Q&A vol. 1 with Magda

► Covid-19 Restrictions, Regulations, Sources

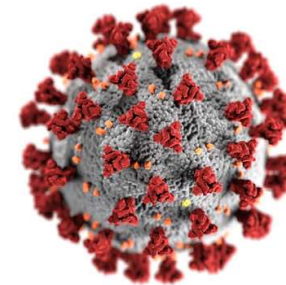

Q&A vol. 2 with Antonella

► Accommodation at Charles University Dorms

Q&A vol. 3 with Mrs. Hurdová

WELCOME WEEK CALENDAR OF SUMMER SEMESTER 2021/22

	9:00	10:00	11:00	12:00	13:00	14:00	15:00	16:00	17:00	18:00	19:00	20:00	21:00
8.2.	Orientation Day, IES PSV UK, room 109, Opletalova, Prague 1.					Orientation with Academic Coordinator at 14:00							
9.2.		Orientation with Academic Coordinator at 10:00							Culture Workshop with Jessica, Holar building, room 212				
10.2.		Orientation with Academic Coordinator at 10:00											
11.2.		Academic guidance meeting in I. Project 1				Catch History with Dr. Horák, IES Opletalova, room 109, Open 12:30 - 2 pm							



WELCOME WEEK 8. - 11.2. 2022

PROGRAMME ORGANIZED BY IO FSV UK 8.-11.02. 2022

- 📌 Welcome Day 08.02. from 9:30 am, Opletalova building & Online
- 📌 Meet the Academic Coordinators 8.-11.02., **Zoom Meetings**
- 📌 Cultural Workshop 09.02.2022 5 pm, Hollar building - **Register via SIS**
- 📌 Carolinum tour 11.02. 9:30 am - **Register via SIS**
- 📌 Czech History seminar 11.02.2022 12:30 pm, Opletalova building - **Register via SIS**
- 📌 Student ID Card pick-up 8.-9.02. 2022, Card Service Center - **allocated time slot**
- 📌 Confirmation of Arrival (Erasmus+ students) 9.-10.02. , Hollar building - **Register via SIS**



WELCOME WEEK 8 - 11.2. 2022

PROGRAMME ORGANIZED BY FACULTY STUDENT CLUBS

Miroslava club - their famous PubQuiz 09.02.2022

SIMS – Laser game 10.02.2022

PROGRAMME ORGANIZED BY ESN CU PRAGUE 14. – 20.02.

More details on their website - <https://esncuprague.cz/#>



Institute of Sociological
Studies



Institute of International Studies



Institute of Economic Studies



Institute of Communication Studies and Journalism



Institute of Political
Studies

STAY TUNED



HOW TO GET THE MOST UPDATED INFO?

- ☒ check your email, both **personal** and your **new faculty email**
- ☒ join the **FB group** for Exchange students
- ☒ check our website <https://fsv.cuni.cz/en/exchange/life/orientation-week>



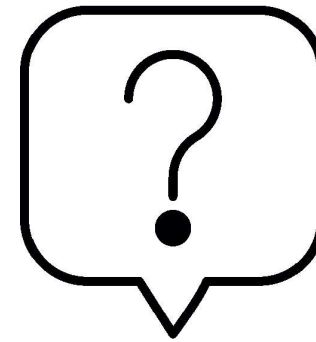
DO NOT FORGET TO WATCH THE VIDEO TUTORIAL FOR EXCHANGE STUDENTS!!



FACULTY
OF SOCIAL SCIENCES
Charles University



THE CHAT IS OPEN NOW.



WE INVITE YOU TO ASK YOUR QUESTIONS
RELATED TO THE WELCOME WEEK.



FACULTY
OF SOCIAL SCIENCES
Charles University



COVID MEASURES AND RECOMMENDATIONS

COVID MEASURES AND RECOMMENDATIONS

- ARRIVAL IN THE CZECH REPUBLIC
- EVERYDAY LIFE MEASURES
- RESTRICTIONS AT DORMITORIES
- RESTRICTIONS AT THE FACULTY OF SOCIAL SCIENCES



ARRIVAL IN THE CZECH REPUBLIC

Rules for citizens of EU+ and foreign nationals with a Visa issued by the Czech Republic:

1) Fill the Passenger locator form



2) One of the 3 scenarios:



Přijezdový formulář

Pravidla pro vyplnění:

- formulář vyplní každá osoba starší 18 let
- děti 12-17 let jsou zahrnuty ve formuláři rodinného příslušníka
- cestující dle 12-17 bez rodinného příslušníka pak vyplňuje formulář samostatně
- povinnost vyplnit formulář se nevztahuje na děti do 12 let
- formulář nevyplňujete, pokud se na Vás vztahuje výjimka specifikovaná v [Ochranném opatření](#)
- pokud máte dvě jména, pak je obě vyplíte do políčky "Jméno" a políčku "Prostřední jméno" ponechte nevyplněnou
- adresní políčku zadávejte pouze pomocí rolovací nabídky, která se objeví až po vyplnění prvních znaků
- pokud obec nemá ulici, ponechte políčku "Ulice" nevyplněnou

Pokud máte problém s vyplněním formuláře, vyhledejte návodů [ZDE](#).
Pokud jste odpověď nenašli v manuálu, pak se obraťte na plfsupport@mzcr.cz.

Public Health Passenger Locator Form

Basic instructions:

- the form must be completed by every passenger over the age of 18
- children aged 12-17 years are included in the form of a family member
- if a child aged 12-17 years is travelling without a family member, they need to complete their own form
- the obligation to complete the form does not apply to children under the age of 12
- the form does not need to be completed if you belong to one of the exceptions specified in the [Protective Measure](#)
- the address is entered using the drop-down list that appears after you enter the first letter
- if the town does not have streets, leave the "street" field blank

If you have difficulties filling in the form, please see the help [HERE](#).
If the answer to your question is not in the manual, contact plfsupport@mzcr.cz.

Příjmení / Family name	Prostřední jméno / Middle name	Jméno / First (given) name
<input type="text"/>	<input type="text"/>	<input type="text"/>
Datum narození (DD.MM.RRRR) / Date of birth (DD.MM.YYYY)	Číslo pasu nebo občanského průkazu / Passport or ID number	Státní příslušnost / Nationality
<input type="text"/>	<input type="text"/>	<input type="text"/>
Rodné číslo (pouze občané ČR) / National ID Number (only Czech citizens)	Číslo telefonu (včetně předvolby), na kterém budete v případě potřeby dostupný(í) / Contact phone number (including country and city codes) on which you can be reached if needed	E-mailová adresa / Email address
<input type="text"/>	<input type="text"/>	<input type="text"/>

Země navštívené 14 dní před přicestováním do České republiky, mimo země, kde byl cestující méně než 12 hod. (např. tranzitní země) / Countries visited 14 days prior to the arrival in the Czech Republic, except for countries where the passenger was less than 12 hours (e.g. transit countries)



ARRIVAL IN THE CZECH REPUBLIC

SCENARIO 1:

*With 2 doses – the second
was at least 14 days ago*



FACULTY
OF SOCIAL SCIENCES
Charles University

YOU ARE VACCINATED / YOU RECOVERED IN THE LAST 180 DAYS*



You must undergo a PCR test max. 72 hrs **before** arrival

*From the EU+	*Outside of the EU+
It is necessary to have an EU digital COVID certificate	It is necessary to have a digital or written confirmation in accordance with the EU regulations; only vaccinations authorized by EMA (4 main vaccinations + Nuvaxovid + Covishield) and administered in one of these countries are accepted.

ARRIVAL IN THE CZECH REPUBLIC

SCENARIO 2:

YOU ARE VACCINATED WITH A BOOSTER SHOT



You don't need to undergo any test



*Recognized in
Czechia as per
conditions in the
previous slide*



ARRIVAL IN THE CZECH REPUBLIC

SCENARIO 3:



FACULTY
OF SOCIAL SCIENCES
Charles University

YOU ARE NOT VACCINATED

*Or your vaccination
has not been
recognized in Czechia*



You must undergo a PCR test max. 72 hrs **before** arrival

AND



You must undergo a PCR test 5-7 days **after** arrival
And wear a respirator until you get a negative result

EVERYDAY LIFE MEASURES



RESPIRATORS

(N95, FFP2) are compulsory in all indoor spaces.

RESTAURANTS, CLUBS, CINEMAS, MUSEUMS + ALL EVENTS WITH MORE THAN 20 PARTICIPANTS:

A mandatory Covid vaccination/recovery pass* will be checked by the staff.

ISOLATION (for positive persons) and QUARANTINE (of their close contacts) is FIVE DAYS for those with no Covid symptoms.

People with Covid symptoms end isolation two days after symptoms clear up.

* A negative test is not sufficient. You need to prove your vaccination as described earlier.



CURRENT MEASURES AGAINST THE SPREAD OF COVID-19

VACCINATION

From February 1, 2022 COVID-19 vaccinations will be considered **valid nine months from the date of the second dose**. A booster shot will extend the validity indefinitely.

It is possible for foreign nationals to [apply for the issue of the Czech version of the COVID Digital Certificate](#).

IN THE CZECH REPUBLIC
VACCINATION AGAINST COVID 19
IS NOT COMPULSORY

Private insurance P-VZP fully reimburses the costs of vaccination to owners of „Comprehensive“ Medical Insurance.

VACCINATION FOR SELF-PAYERS



WHO IS IT FOR?

A person not insured within the public health insurance system of the Czech Republic or other EU member states can be vaccinated in this manner:

- **CITIZEN OF THE CZECH REPUBLIC**
- **FOREIGNER**
(from the EU or third countries) with a residence permit for the Czech Republic for more than 90 days pursuant to the Act on the Residence of Foreign Nationals, who simultaneously meets one of the following conditions:
 - a) has a valid long-term or permanent residence permit in the Czech Republic,
 - b) holds a valid long-term visa,
 - c) is an EU citizen with confirmation of temporary residency or a permanent residence permit in the Czech Republic,
 - d) is a family member of an EU citizen with confirmation of temporary residency or a permanent residence permit in the Czech Republic.



WHERE TO GET VACCINATED?

There will be at least one vaccination center in each region. The list of cooperating vaccination centers is available at registrace.mzcr.cz/samoplatici/ocm.



WHICH VACCINE IS USED?

The COMIRNATY vaccine (manufactured by BioNTech/Pfizer).



HOW TO REGISTER?

You can register for vaccination at crs.mzcr.cz.



HOW MUCH DOES IT COST?

The maximum price per one dose including application will not exceed CZK 810.



WHAT SHOULD I BRING?

1. A document to check your identity
2. A document to check your residence permit in the Czech Republic (does not apply to Czech citizens)
3. Payment card/cash (some vaccination centers accept only payment cards on the spot)



WHEN AND HOW DO I GET AN EU COVID-19 CERTIFICATE?

You can collect the certificate immediately after vaccination at the Citizen Vaccination Portal - <https://ocko.uzis.cz>.



NEED ADVICE?

You can address further questions to the help line at 1221 or by e-mail at covid-podpora@nakit.cz.

RESTRICTIONS AT THE CU DORMITORIES

- **Charles University dormitories** follow the **government measures** regarding the arrival in the Czech Republic

If you are not vaccinated (or your vaccination hasn't been officially recognized) you have to be in **self isolation** (wearing a respirator everywhere, alone in your room – no room mates) for 5 days.



You must wear a respirator in the common areas!

Covid-19 restrictions at the dormitories available [here](#)



- Every time that you leave the Czech Republic for more than 12 hours – at your return you must follow the regulations for arrivals in the Czech Republic.



RESTRICTIONS AT THE FACULTY OF SOCIAL SCIENCES



FACULTY
OF SOCIAL SCIENCES
Charles University

AT CHARLES UNIVESITY, FSV

Teaching is generally carried out
in a **HYBRID FORM**
(for each course the teaching form
details are specified in SIS).

You must wear a **RESPIRATOR**
inside the buildings.

Students receiving education are
not required to demonstrate their
Covid status for attending
CLASSES*.

But for **SPECIAL EVENTS** with
more than 20 people your Covid
pass (vaccination or recovery) will
be required



Other Faculties may have
different restrictions: we
suggest to check their web
page before attending
classes/events

All government measures are
valid. In case of changes we
will promptly inform you

**regardless of how many students are in the class*

SOURCES OF INFORMATION REGARDING COVID 19

- [FSV web page](#)
- [COVID-19 FAQs](#)
- [Charles University Web Page](#)
- [Ministry of the Interior](#)
- [Ministry of Health](#)
- [Ministry of Foreign Affairs](#)
- [EU digital certificate](#)
- [Vaccinations for foreigners in the Czech Republic](#)
- [Prague COVID-19 testing points](#)

For information about COVID-19

DIAL 1221





THE CHAT IS OPEN NOW.



WE INVITE YOU TO ASK YOUR QUESTIONS
RELATED TO THE COVID MEASURES AND
RECOMMENDATIONS.



ACCOMMODATION AT CU DORMS

CHECK-IN PROCEDURE



Follow the **check-in date** stated on the Accommodation Voucher.
If you need to **arrive another day**, please inform the accommodation office, at least **3 days prior to your arrival!**

Registration

Visit the **accommodation office during office hours** and bring your:

- ☒ ID card/passport
- ☒ Accommodation voucher
- ☒ Confirmation of Deposit payment

You can register only during the office hours!

Communication is the key

Inform the accommodation office:

- Arrival **outside of the office hours**
- The **arrival date differs** from the date on the Accommodation voucher

Your **reservation will be kept only for a week** from the date stated on the voucher unless you **inform the accommodation office.**

accommodation@kam.cuni.cz
bounce@kam.cuni.cz



FACULTY
OF SOCIAL SCIENCES
Charles University



THE CHAT IS OPEN NOW.



WE INVITE YOU TO ASK YOUR QUESTIONS
RELATED TO THE UNIVERSITY DORMS.



FACULTY
OF SOCIAL SCIENCES
Charles University

WHAT NEXT?

JOIN THE ONLINE MEETING TOMORROW 1ST FEB FROM 3 PM CET



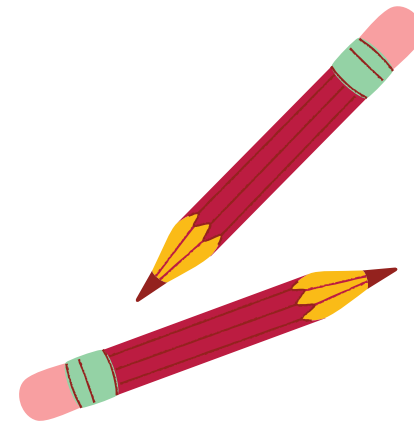
Course Registration



Academic Details



Q&A session



BEFORE THE MEETING WATCH THE VIDEO TUTORIALS N. 12 - 17



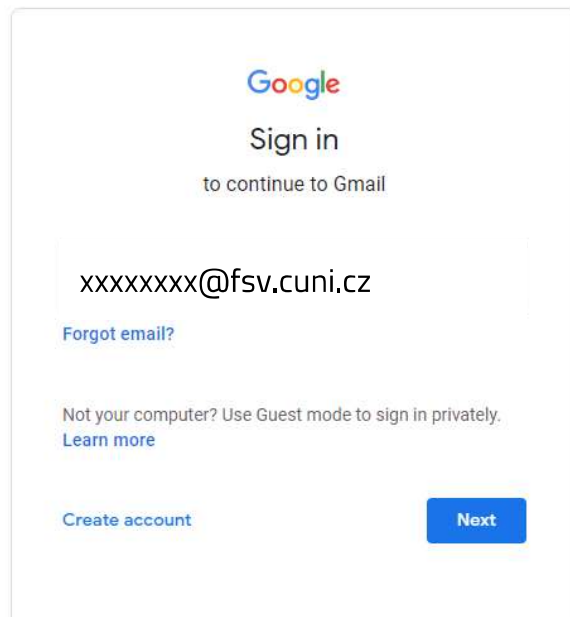
FACULTY
OF SOCIAL SCIENCES
Charles University

FACULTY EMAIL

WHEN: 31st January, 2022

WHERE: in GOOGLE Domaine

HOW: Faculty email instructions will be sent to your personal email

A screenshot of the Google Sign-in interface. At the top is the Google logo, followed by the text "Sign in" and "to continue to Gmail". Below this is a text input field containing the email address "xxxxxxx@fsv.cuni.cz". Under the input field is a blue link that says "Forgot email?". Further down, there is a line of text: "Not your computer? Use Guest mode to sign in privately." followed by a blue link "Learn more". At the bottom left is a blue link "Create account", and at the bottom right is a blue button labeled "Next".

Student's Faculty Email Address

login name: student personal number (8 digit number)

xxxxxxx@fsv.cuni.cz

password: student's password set up in CAS

From this day forward this will be your primary contact with the professors and the IO FSV UK.

Please, check it regurally.

Detailed instructions are available [HERE](#)



CHARLES
UNIVERSITY

FSV EXCHANGE GOOGLE CALENDAR

WHEN: 31st January, 2022

WHERE: part of your Faculty Email

HOW: Faculty Calendar FSV Exchange - instructions will be sent to your faculty email

Detailed instructions are available [HERE](#)

The screenshot shows the Google Calendar interface for January 2022. The main calendar view displays a grid of dates from January 30 to January 5. Key events are highlighted in green and blue. The sidebar on the left contains several sections: 'Vytvořit' (Create), 'Únor 2022' (February 2022) with a calendar view, 'Schůzka s...' (Meeting with...) with a search bar, 'Statistiky o čase' (Time statistics) showing a bar chart for the period 1. - 28. ÚNO 2022, and 'Moje kalendáře' (My calendars) with a list of calendars including 'Study Abroad FSV', 'Exchange FSV' (checked), 'Narozeniny' (Birthdays), 'Připomenutí' (Reminders), and 'Úkoly' (Tasks). The top right corner shows the 'FSV UK' logo and a 'Měsíc' (Month) dropdown menu.

DO NOT MISS:
IMPORTANT DEADLINES
STUDENT CLUB ACTIVITIES
REGISTRATION TO EXAMS
BANK HOLIDAYS



CHARLES
UNIVERSITY

YOUR IO CONTACT



OFFICE 216, HOLLAR BUILDING, FSV UK SMETANOVO NABREZI 6, PRAGUE 1



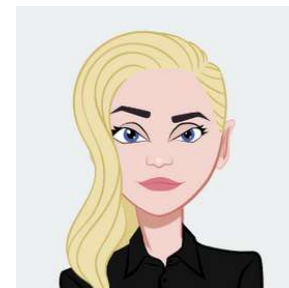
ERASMUS+ (EU COUNTRIES + TURKEY)

Magda (Magdaléna Čapková)

incoming@fsv.cuni.cz

exchange@fsv.cuni.cz

Gabča (Gabriela Vernerová)



ERASMUS+ ICM, INTER-FACULTY, INTER-UNIVERSITY



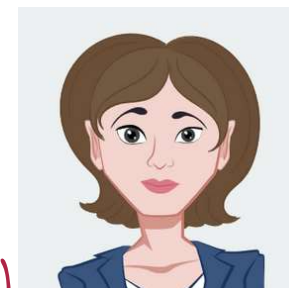
INTER-GOVERNMENT, CEEPUS, AKTION, DAAD

Antonella (Antonella Kopic Bernardon)

inbound@fsv.cuni.cz

studyabroad@fsv.cuni.cz

Majka (Marie Stanovská)



FREEMOVERS (PAID SHORT-TERM STUDY VISITS)



FACULTY
OF SOCIAL SCIENCES
Charles University