

#PRAGUELIFE

ANTHOLOGY OF HINTS FOR LIVING IN PRAGUE
EP.9: WHERE CAN I HAVE A
COFFEE/DRINK?



Swan



Tulip



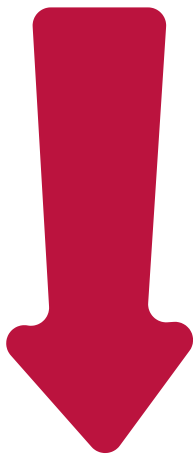
Victoria Arduino

FSV UK
SUCCESS
MADE IN PRAGUE

#PRAGUELIFE EP. 9: WHERE CAN I HAVE A COFFEE/DRINK?



Studying abroad is an amazing experience but also very tiring. Sometimes, you will need to take a break in your revisions. In this way, here are some addresses of cafés and restaurants linked with charities or associations and which are promoting good values.



#PRAGUELIFE EP. 9: WHERE CAN I HAVE A COFFEE/DRINK?



AdAstra is a café-bistro located in the city centre (Prague 2) that employs people with disabilities. This job is very important for them as it helps them to interact and socialise with the society.



Podskalská 2054, 128 00 Prague 2

PRACTICAL INFO:



- Mon-Fri.: 11:00-23:00
- Sat: 10:00-22:00
- Menu differs each day
- Possible to play piano...
- Library
- Around 160 CZK for a meal

#PRAGUELIFE EP. 9: WHERE CAN I HAVE A COFFEE/DRINK?



The **Mezi řádky FFUK** bistro is another place where you can go for a lunch meanwhile helping people with disabilities to integrate in society. They have several points of sale in the city.

PRACTICAL INFO:

- Mon-Thu: 8:00-18:00
- Fri: 8:00-15:00
- Inside the faculty of Arts



nám. Jana Palacha 1/2, Prague, Czech Republic

#PRAGUELIFE EP. 9: WHERE CAN I HAVE A COFFEE/DRINK?



37 Vodičkova street



The **Langhans** café is associated with an NGO and non-profit organisation (People in Need) which collects money in order to help people in need. For example, the charity combats poverty and provides humanitarian aid in critical regions around the world.

PRACTICAL INFO:

- Mon-Fri. 11:00-20:00
- Sat-Sun: 13:00-19:00
- part of the Langhans centre with a gallery

#PRAGUELIFE EP. 9: WHERE CAN I HAVE A COFFEE/DRINK?



Mamacoffee is a café based on the corporate social responsibility business model. This social enterprise tries to reduce its impact on the environment as much as possible, guarantee a fair trade and has a personal contact with coffee farmers.



Vodičkova 6, Prague 1



PRACTICAL INFO:

- Mon-Fri: 8:00-22:00
- Sat-Sun: 9:00-22:00
- You can also eat there
- Menu around 140 CZK
- A transparent company with good values



#PRAGUELIFE EP. 9: WHERE CAN I HAVE A COFFEE/DRINK?

The café/restaurant **Střecha** gives a second chance to people who experience homelessness or served a sentence. The employees can all give their opinion in the management of the company and are set on equal footing. Moreover, the food is vegan as it promotes a sustainable and ecological way of life.



PRACTICAL INFO:

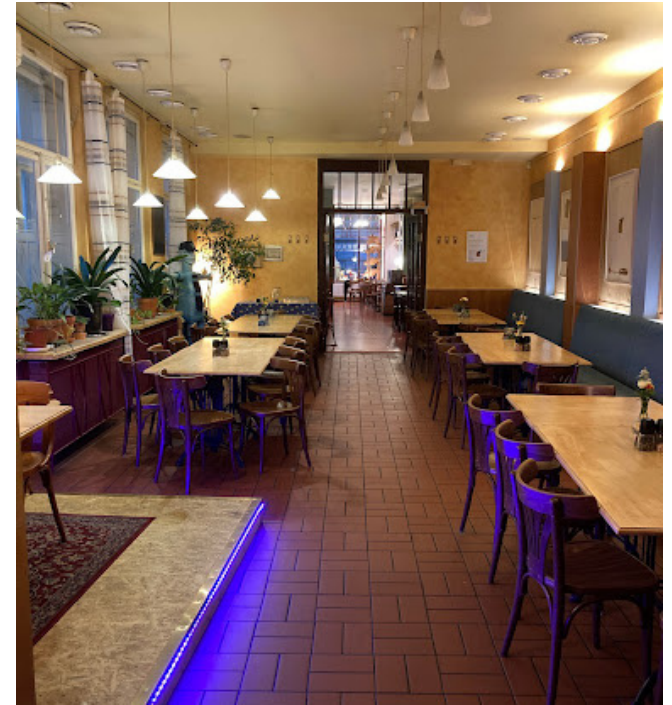
- Mon-Sat: 11:00-00:00
- to have a drink or to eat
- Czech and eastern traditional meals
- 100% vegan



Křemencova 7, Prague 1

#PRAGUELIFE EP. 9: WHERE CAN I HAVE A COFFEE/DRINK?

The café **Therapy** is another social enterprise which gives a chance to people with less chances of employment to start a new life. You can also eat and have a snack there.



Školská 30, Prague 1



PRACTICAL INFO:

- Mon-Fri: 12:00-22:00
- Sat-Sun: 16:00-22:00

- Animals allowed

